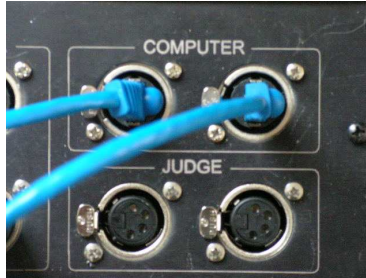


Setup:

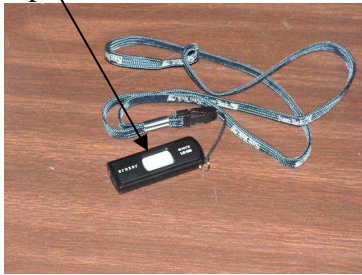
Laptops

1. Place the Main laptop near the Data Entry Operator, and the Backup laptop next to the main laptop.
2. Connect a Blue Ethernet cable from each laptop to the Computer port on the Processor.



It does not matter which terminal is the Main laptop and which is the Backup laptop

3. Connect the USB Flash Drive to the right side bottom port on the Main laptop. The connector on the USB Flash Drive slides out by moving the white plastic on top.



4. Connect the Printer Cable to a USB port on the back of the Main laptop - and to the Laser Printer.



5. Connect a Dell Power Brick to each laptop and a UPS plug with backup power. Connect the Laser power cord to the Laser Printer and a UPS plug without backup power. The Laser should NOT have backup power.
6. Connect a mouse to each laptop.

Teardown:

Laptops

1. Disconnect the Dell power bricks from the laptops and the UPS. Wrap the cords around each power brick and fasten with the strap. Place in Laptop/Laser shipping container.



2. Disconnect the USB Flash Drive from the Main laptop. Disconnect mice from both laptops. Place in Laptop/Laser shipping container.
3. Disconnect the Ethernet cables. Wrap and place in the Processor shipping container, wrapped around the Black tape.
4. Place both Laptops, the power bricks, the mice, the USB Flash drive, the Laser Printer, the Laser Printer power cord, and the Printer Cable in Laptop/Laser shipping container, along with the extra toner cartridge box. If you installed the extra toner, return the empty toner in the old box, and notify Jim Achtenberg.



Extra toner.
2 Dell power bricks, 2 mice, flash drive, printer cable, and printer power cable underneath.

2 Dell laptops, in bags.

Laser Printer documentation

Laser Printer